

## The Creative Industries in PA State House District 7 Representative Michael C. Gruitza

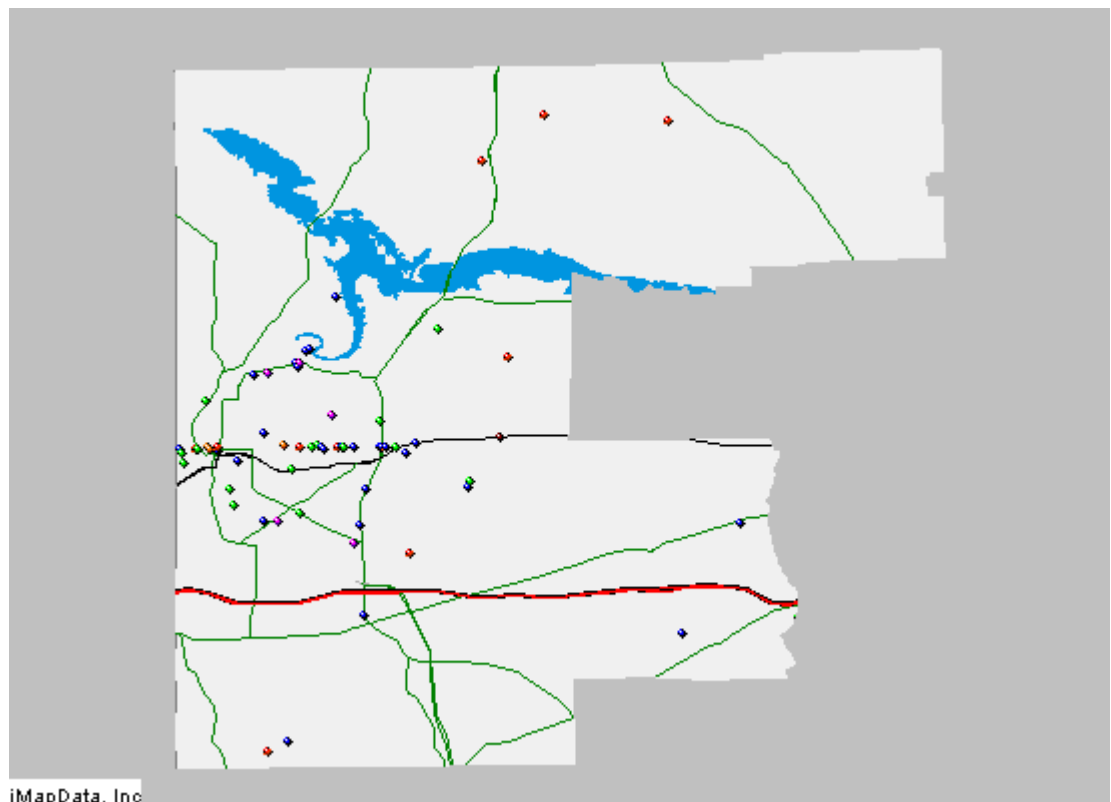
This *Creative Industries* report offers a research-based approach to understanding the scope and economic importance of the arts in **PA State House District 7**. The creative industries are composed of arts-centric businesses that range from nonprofit museums, symphonies, and theaters to for-profit film, architecture, and advertising companies. The creative industries are the high-octane fuel that drives the “information economy”—the fastest growing segment of the nation’s economy.

**Nationally**, there are 548,000 businesses in the U.S. involved in the creation or distribution of the arts that employ 2.9 million people—4.3 percent of all businesses and 2.2 percent of all employees. The creative industries have remained strong in comparison to business trends nationally. Between 2004 and 2006, a time when the total number of U.S. businesses dropped 0.2 percent, arts businesses decreased just 0.12 percent. Similarly, while employment nationally fell 5.6 percent during the same time period, arts employment dipped just 3.7 percent. The source for these data is Dun & Bradstreet, the most comprehensive and trusted source for business information in the U.S.

**As of January 2006, PA State House District 7 is home to 66 arts-related businesses that employ 267 people.** These arts-centric businesses play an important role in building and sustaining economic vibrancy. They employ people, spend money locally, generate government revenue, and are a cornerstone of tourism and economic development. The map below provides a clear picture of the creative industries in **PA State House District 7**, with each dot representing an arts-centric business.

### 66 Arts-Related Businesses in PA State House District 7 Employ 267 People

- Arts-Related Business**
- Museum/Collections
  - Performing Arts
  - Visual/Photography
  - Film, Radio, TV
  - Design/Publishing
  - Arts Schools/Services





**Arts-Related Businesses and Employment in  
PA State House District 7  
January 2006**

<b>CATEGORY</b>	<b>BUSINESSES</b>	<b>EMPLOYEES</b>
<b>Museums and Collections</b>	<b>1</b>	<b>1</b>
Museums	1	1
<b>Performing Arts</b>	<b>18</b>	<b>49</b>
Music	13	33
Services & Facilities	5	16
<b>Visual Arts/Photography</b>	<b>24</b>	<b>104</b>
Crafts	1	1
Photography	13	24
Services	10	79
<b>Film, Radio and TV</b>	<b>11</b>	<b>53</b>
Motion Pictures	10	52
Radio	1	1
<b>Design and Publishing</b>	<b>8</b>	<b>51</b>
Architecture	2	39
Design	3	2
Advertising	3	10
<b>Arts Schools and Services</b>	<b>4</b>	<b>9</b>
Arts Schools and Instruction	4	9
<b>GRAND TOTAL</b>	<b>66</b>	<b>267</b>

Note: As the source of these data is based solely on businesses that have registered with Dun & Bradstreet, our analyses indicate an under-representation of nonprofit arts organizations and individual artists. Therefore, this Creative Industries report should be considered a conservative estimate.



## Arts-Related Business and Employment in PA State House District 7 2004 to 2006

CATEGORY	BUSINESSES			EMPLOYEES		
	2004	2006	% Change	2004	2006	% Change
<b>Museums and Collections</b>	<b>2</b>	<b>1</b>	<b>-50.00%</b>	<b>3</b>	<b>1</b>	<b>-66.67%</b>
Museums	2	1	-50.00%	3	1	-66.67%
<b>Performing Arts</b>	<b>13</b>	<b>18</b>	<b>38.46%</b>	<b>44</b>	<b>49</b>	<b>11.36%</b>
Music	11	13	18.18%	33	33	0.00%
Services & Facilities	2	5	150.00%	11	16	45.45%
<b>Visual Arts/Photography</b>	<b>31</b>	<b>24</b>	<b>-22.58%</b>	<b>115</b>	<b>104</b>	<b>-9.57%</b>
Crafts	1	1	0.00%	1	1	0.00%
Photography	16	13	-18.75%	29	24	-17.24%
Services	14	10	-28.57%	85	79	-7.06%
<b>Film, Radio and TV</b>	<b>11</b>	<b>11</b>	<b>0.00%</b>	<b>56</b>	<b>53</b>	<b>-5.36%</b>
Motion Pictures	10	10	0.00%	55	52	-5.45%
Radio	1	1	0.00%	1	1	0.00%
<b>Design and Publishing</b>	<b>8</b>	<b>8</b>	<b>0.00%</b>	<b>70</b>	<b>51</b>	<b>-27.14%</b>
Architecture	2	2	0.00%	39	39	0.00%
Design	2	3	50.00%	3	2	-33.33%
Publishing	1	0	-100.00%	2	0	-200.00%
Advertising	3	3	0.00%	26	10	-61.54%
<b>Arts Schools and Services</b>	<b>5</b>	<b>4</b>	<b>-20.00%</b>	<b>5</b>	<b>9</b>	<b>80.00%</b>
Arts Councils	1	0	-100.00%	1	0	-100.00%
Arts Schools and Instruction	4	4	0.00%	4	9	125.00%
<b>GRAND TOTAL</b>	<b>70</b>	<b>66</b>	<b>-5.71%</b>	<b>293</b>	<b>267</b>	<b>-8.87%</b>

Data Source: D&B January 2006 & January 2004

[www.AmericansForTheArts.org](http://www.AmericansForTheArts.org)